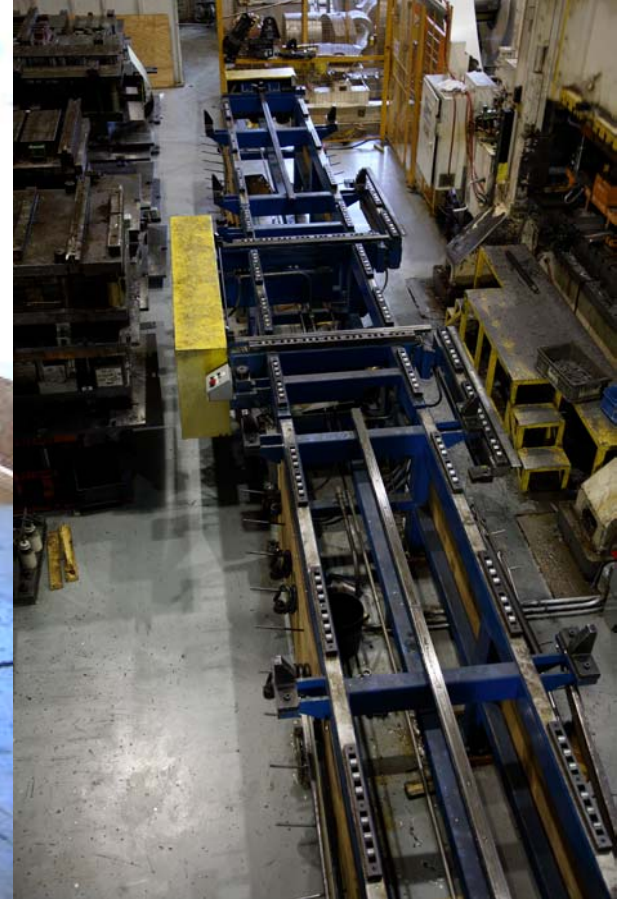


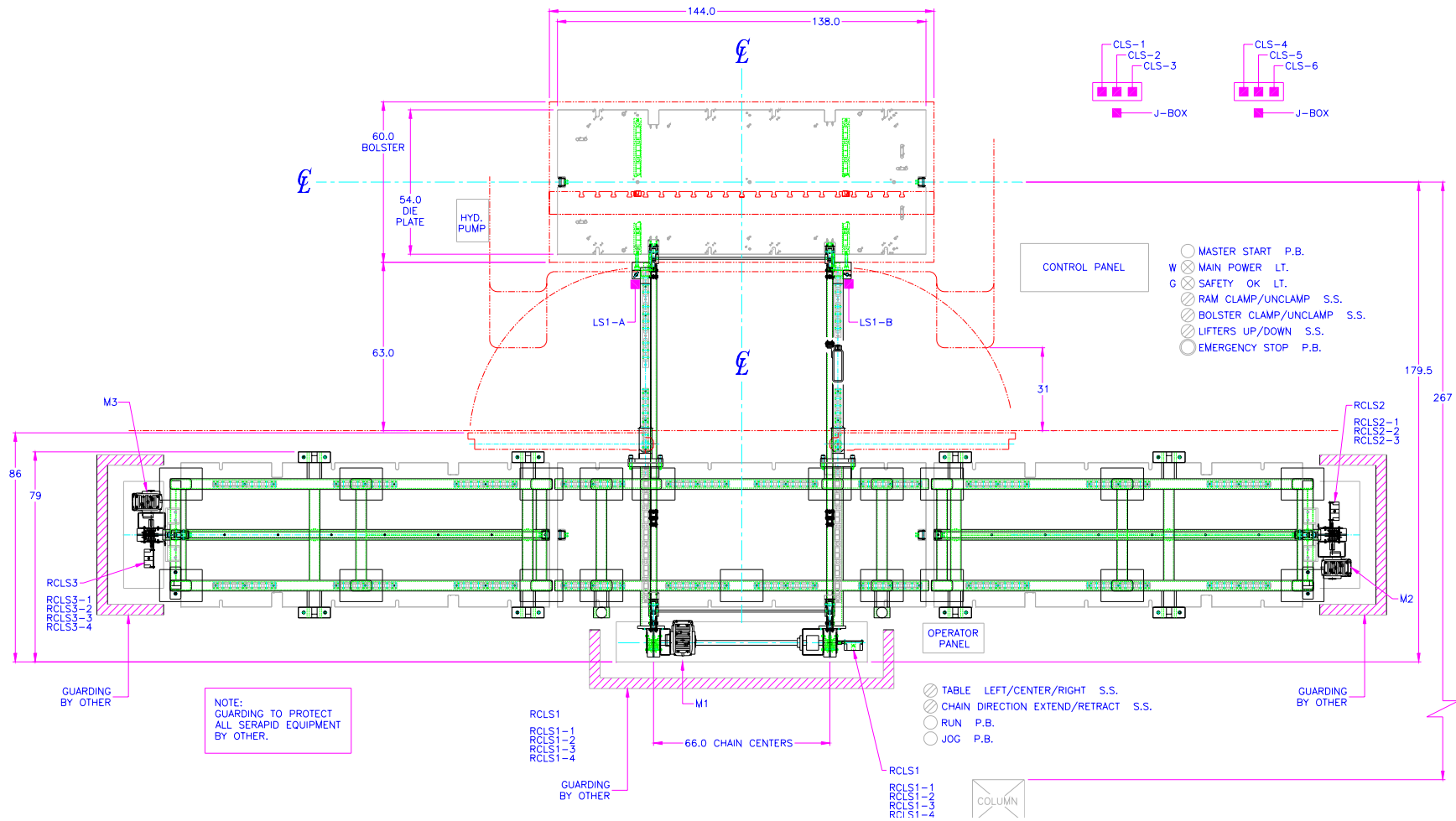
# **SERAPID**

**DIE EXCHANGE T-TABLE**



# SERAPID

## DIE EXCHANGE T-TABLE



### Application Information

Die exchange times: 10 – 15 min.  
 Die Weight: 40,000 lbs. max.  
 Bolster Dimensions: 60 in. (F-B) x 144 in. (L-R)  
 Transfer Height: 56 in.

### System Information

(2) Single Chain 60SC PPS  
 (1) Dual Chain 60SC PPS  
 Engineered Swinging Bolster Extensions  
 BTSB, Rod Clamps  
 LGGH, Heavy-duty hydraulic roller bars  
 LP125-12, Hydraulic Power Unit