

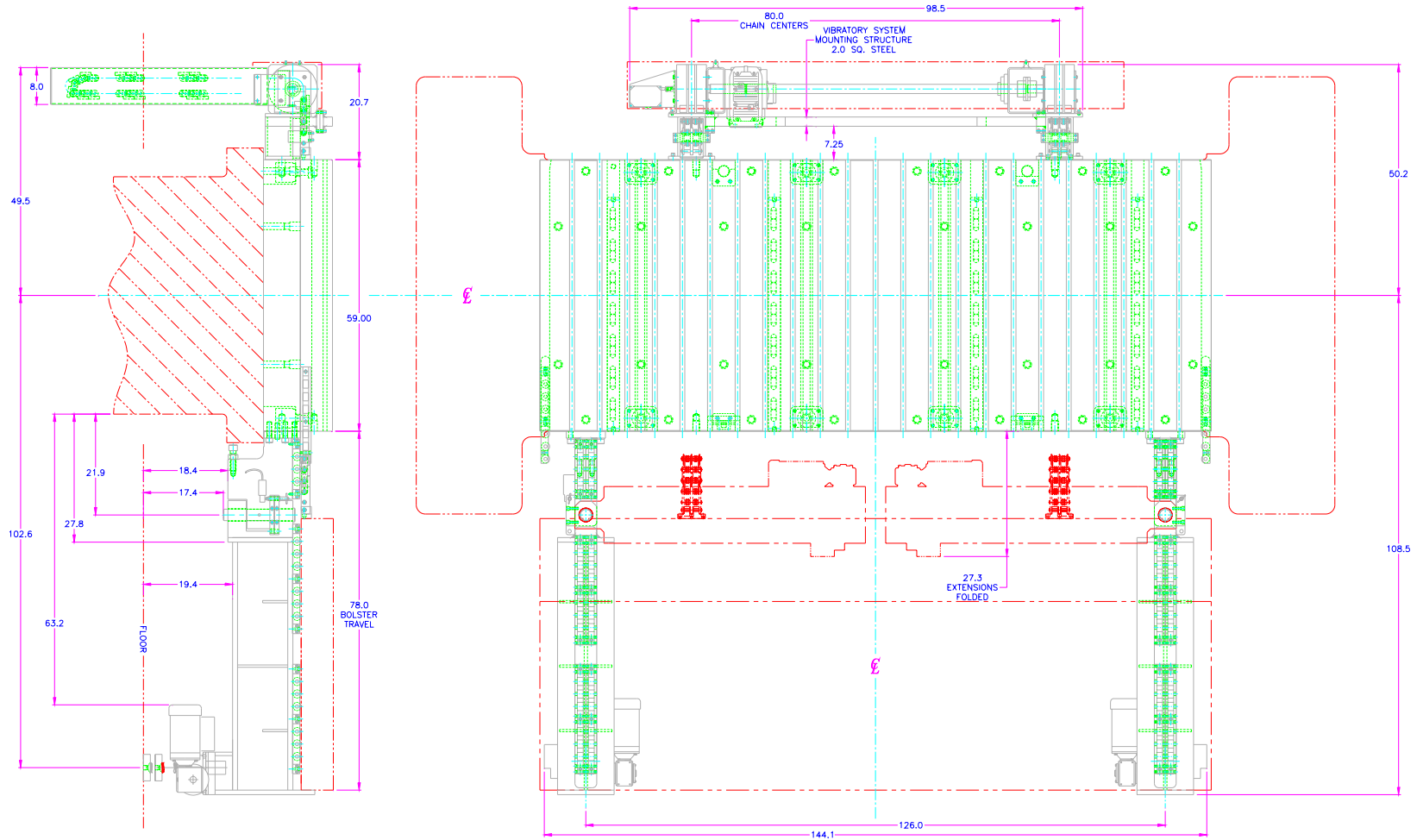
SERAPID

RAISED ROLLING BOLSTER with ENGINEERED BOLSTER EXTENSIONS



SERAPID

RAISED ROLLING BOLSTER with ENGINEERED BOLSTER EXTENSIONS



Application Information

Die exchange times: 10 – 20 min.
Die Weight: 50,000 lbs. max.
Bolster Dimensions: 59 in. (F-B) x 146 in. (L-R) x 8 in. (H)
Bolster Weight: 20,000 lbs.
Positioning Req.: +/- 0.002 in.

System Information

Rigid Chain Push-Pull System / Rigid Chain Type: CH60 D
Engineered Bolster Extensions w/ motorized leg supports
BTEN, Rod Camps with flanged mounting for bolster
BTSB, Rod Clamps for upper die shoe
LGGH, Heavy-duty hydraulic roller bars
LP125-12, Hydraulic Power Unit