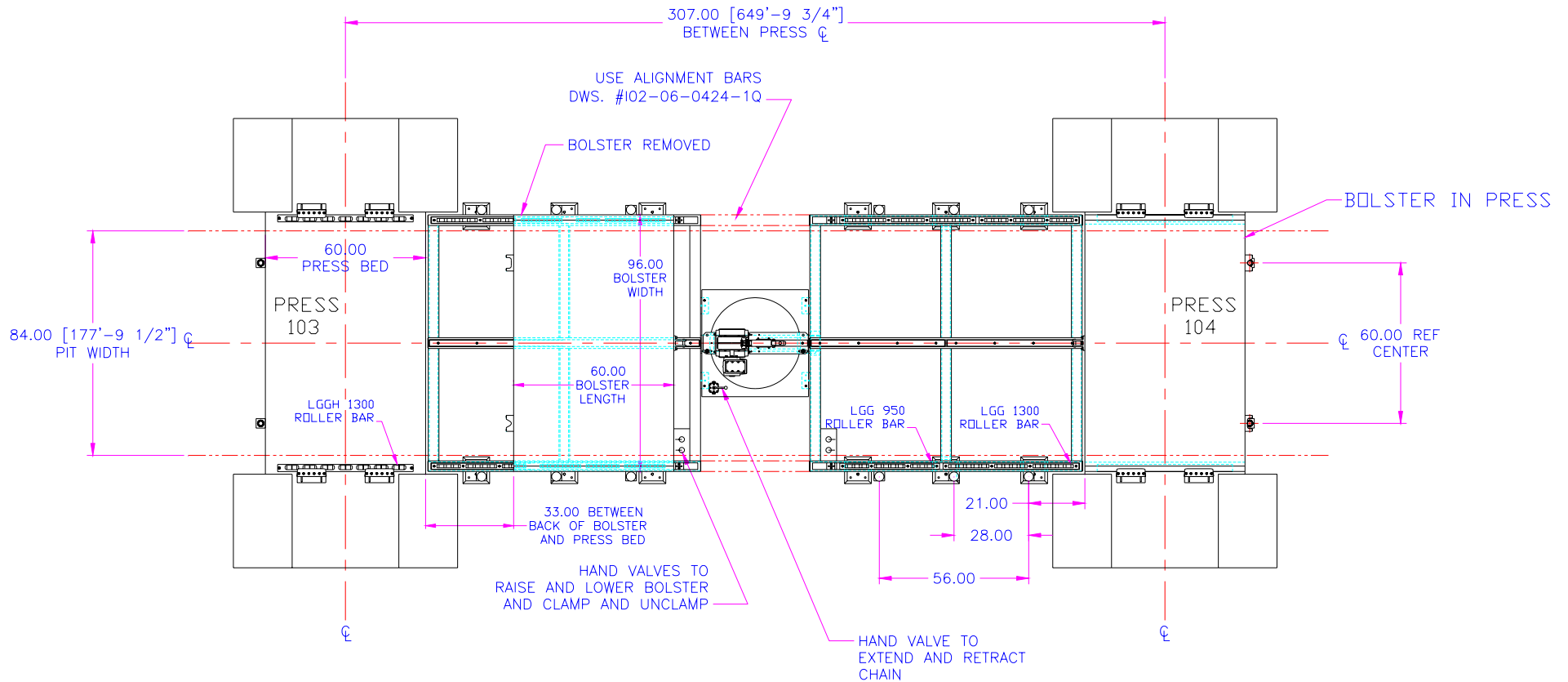


SERAPID

RAISED ROLLING BOLSTER with TRANSFER TABLE



SERAPID



Application Information

Die exchange times: 10 – 20 min.
 Die Weight: 17,000 lbs. max.
 Bolster Dimensions: 60 in. (F-B) x 96 in. (L-R) x 10 in. (H)
 Bolster Weight: 13,000 lbs.
 Positioning Req.: +/- 0.002 in.

System Information

Rotating Rigid Chain Push-Pull System used for two presses
 Rigid Chain Type: CH60PSC
 LGGH, Heavy-duty hydraulic roller bars
 PSL Ledge Clamp
 LP125-12, Hydraulic Power Unit