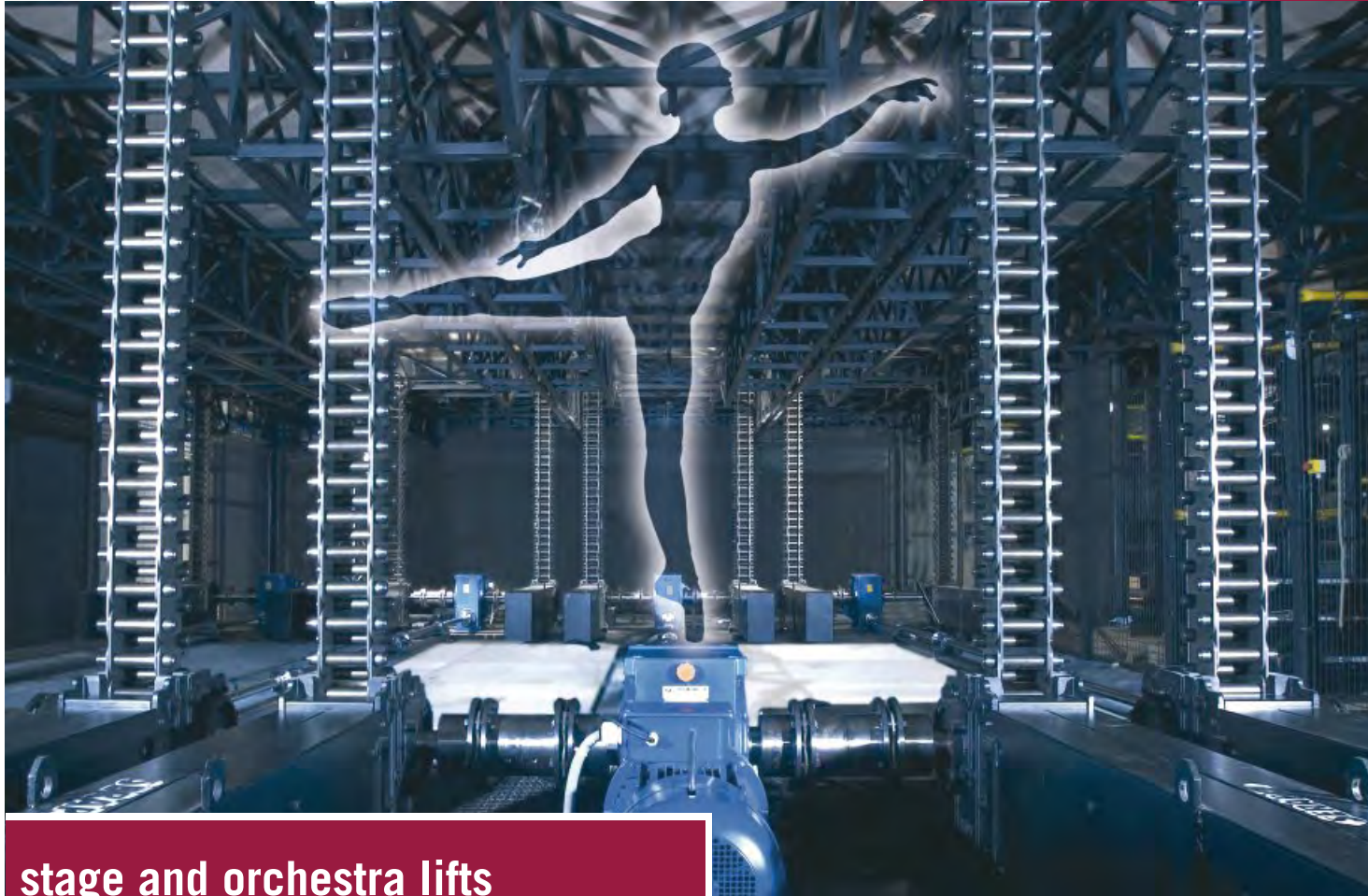


**LinkLift—the lift system
for the entertainment industry**

**the art
of
motion**



**stage and orchestra lifts
multi-purpose venues
complete turnkey systems**

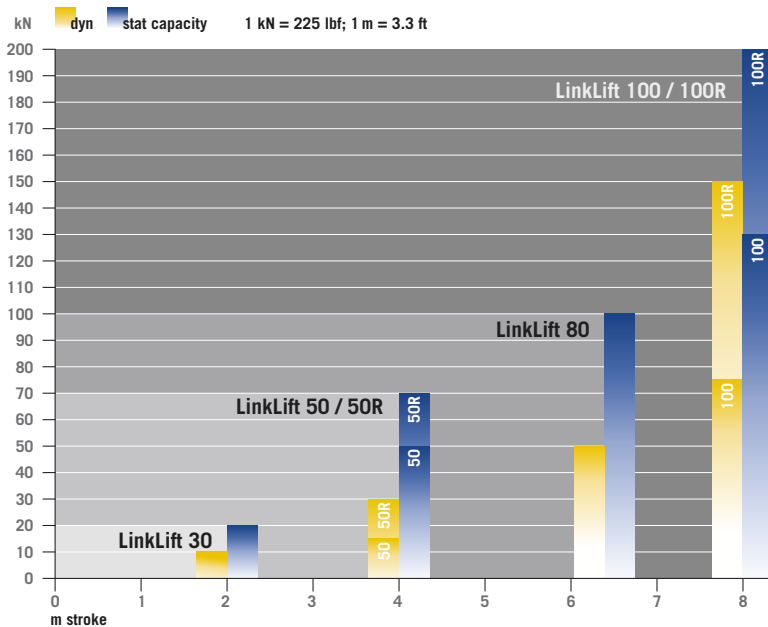
SERAPID
PUSHING AHEAD

Our LinkLift series of elevator driving systems has been enthusiastically welcomed in the entertainment industry. Worldwide installations in theaters, concert halls and arenas have made the LinkLift a standard in load capacity and elevating height, as well as for safety, reliability and flexibility.

This success is due to the LinkLift's unrivaled technology, which allows high-performance solutions to be implemented easily even in complex projects and demanding environments. Our comprehensive range of models has the right lift system for small tables as well as for big platforms.

At the leading edge: the LinkLift series for stage and orchestra lifts, multi-purpose venues and complete turnkey systems

SERAPID has been active in linear-motion devices since 1970. The rigid pushing chain, our own development and the core of our technology, is used in a broad range of industrial applications. The LinkLift is a special type of rigid chain, designed specifically for the vertical movement of heavy loads in the entertainment industry.



the art
of
motion



mechanical

The LinkLift is a chain of specially shaped links interlocking under a load to form a rigid lifting column.

telescopic

When inactive, the lifting chain remains flexible so it can be redirected, coiled and stored efficiently.

strong, stable, reliable

The links are block-shaped with square cross-sections, and the center of gravity is right in the geometric center. When aligned and interlocked with each other, they form a lifting column of high stability and rigidity.

Four key features

Complete range of models: The range of our LinkLift models allow solutions to match your exact specifications. The standard range goes as far as 150 kN of dynamic load per lift column, and up to 8 m lifting height. Simple accommodations allow heights up to 20 m.

Safety: The LinkLift complies with all safety standards currently put forth in the entertainment industry. It is also able to take up external pulling forces, such as those occurring through seismic shock or at sea — making it the first choice for stages on cruise liners.

Reliability and lifetime: SERAPID mechanical actuators prove their performance capabilities in the toughest industrial environments. The LinkLift benefits from these experiences, ensuring a long life and low maintenance.

Speed and noise: Chain movement is only dependent on the rotation of the input shaft, creating a wide range of speeds. Its slow rotational movement gives excellent acoustic characteristics. Standard speeds are up to 300 mm/s.



SERAPID
PUSHING AHEAD

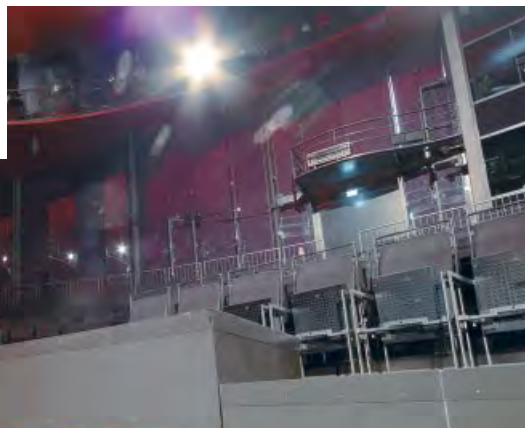
Highlights of stage and venue engineering: LinkLift installations all over the globe

Performance and ease of use have made the LinkLift a star — and not just on, or rather under the best-renowned stages in the world, but also at sea, on modern cruise liners. The diversity of installations is proof for the flexibility of this lifting concept. It expands your possibilities without limiting creativity.

USA

Wyly Theatre

SERAPID's engineering skills were proven in the complex scope of supply for the all-glass, vertically stacked Wyly Theatre. This project includes 46 LinkLift columns for the proscenium lift, seating wagon lift, six seat configuration lifts, six turntables and 12 seating riser lifts. In addition, we supplied two push-pull systems for the 'superfly towers,' which service the stage levels, enabling seating to be lifted or lowered from storage facilities.



Germany

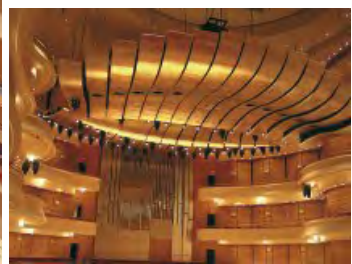
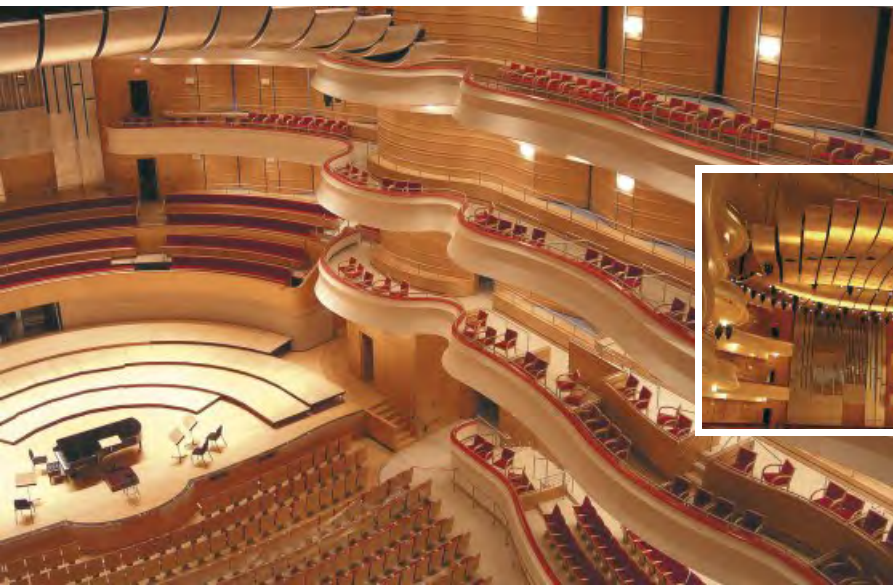
Hans-Otto-Theater

The newly built theater at Potsdam, near Berlin, features a multi-functional auditorium. Fifty lifting tables fitted with LinkLift 30 systems allow the entire room to be reconfigured in just a few minutes. In addition, there is a large orchestra pit with a platform moving on LinkLift 80 systems.



On board

At sea, special conditions for stage equipment lead to very specific guiding constraints. LinkLift solutions are often called upon because of their dynamic qualities, which also include the capability to withstand tension forces.



USA *Orange County Performing Artscenter*

With a rich array of music and dance performances, the entertainment venues situated at Costa Mesa, California, boast flexible stage equipment to accommodate all stage heights and different seating requirements. It incorporates LinkLift 100 systems.

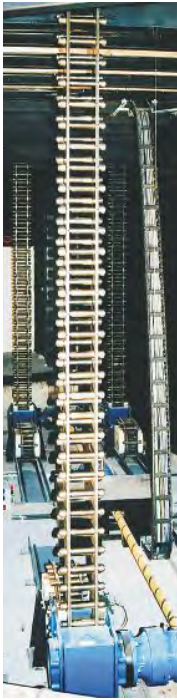


LinkLift installations all over the globe



Denmark *Copenhagen Opera*

The opera house at Copenhagen has benefited from SERAPID technology for three lifts reaching a speed of 300 mm/s and a stroke of 13.4 m. The flexibility and strength of our LinkLift products meant the demanding project specifications were realized without any compromises.



For more examples and reference installations visit our website at www.serapid.us



Our experts are your partners

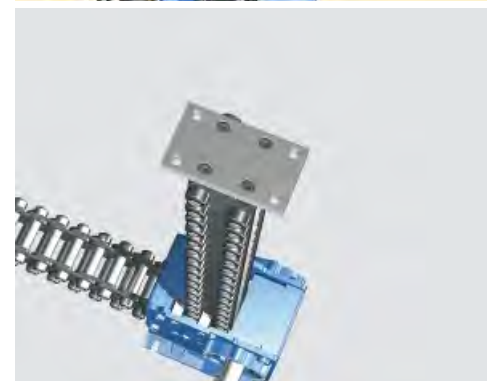
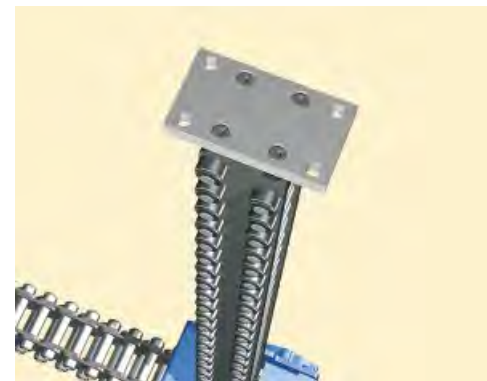
From the first stages of planning, SERAPID offers to lend its know-how and expertise to your project. Our application engineers are available to undertake an analysis of specifications in order to optimize project efficiency.

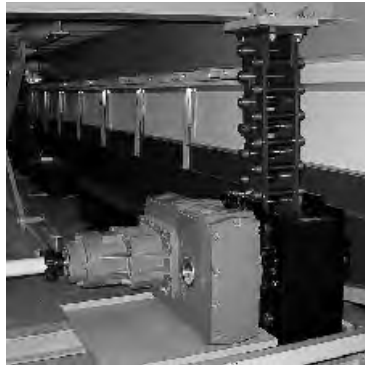
Design support: Whether calculating the power required for a particular system or the overall impact of an alternative solution, SERAPID engineers are always ready to help. Our substantial range of products enables us to offer a multitude of solutions. Our engineers' drawings make it simple to integrate the lift systems into overall designs.

Complete turnkey system provider: SERAPID provides full service stage and orchestra lift platform systems from engineering to installation.

Information and assistance: A practical guide is available for engineers, architects and consultants to select the right columns and drive systems. Our design rules are also thoroughly described and illustrated, from initial sizing to final orders.

Advice at hand: Our LinkLift customers are welcome to contact the SERAPID team at any time: Our dedicated and attentive staff will always give an accurate and direct answer to any question. The success of our company is not only due to the quality of our products and our professional competence, we owe much to the thriving relationships we have with our customers, demonstrating our will to build long-lasting partnerships.





www.serapid.us

SERAPID INC.

5400 18 Mile Road
Sterling Heights MI 48314, USA
Phone +1 586 274 0774
info-us@serapid.com · www.serapid.us



STI SERAPID Group

ZI Bleue L. Delaporte
F-76370 Rouxmesnil-Bouteilles, France
Tél. +33 (0)2 32 06 35 60
info-fr@serapid.com · www.serapid.fr

SERAPID Ltd

Bury St Edmunds, UK
Tel: +44 (0)1359 233335
info-uk@serapid.com · www.serapid.com

SERAPID Deutschland GmbH

D-97967 Bad Mergentheim
Tel. +49 (0)7931 96 47-0
info-de@serapid.com · www.serapid.de

SERAPID Beijing Representative Office

Beijing, P.R. China
Tel: + 86 10 8447 5447
info-cn@serapid.com · www.serapid.cn

www.serapid.com

