

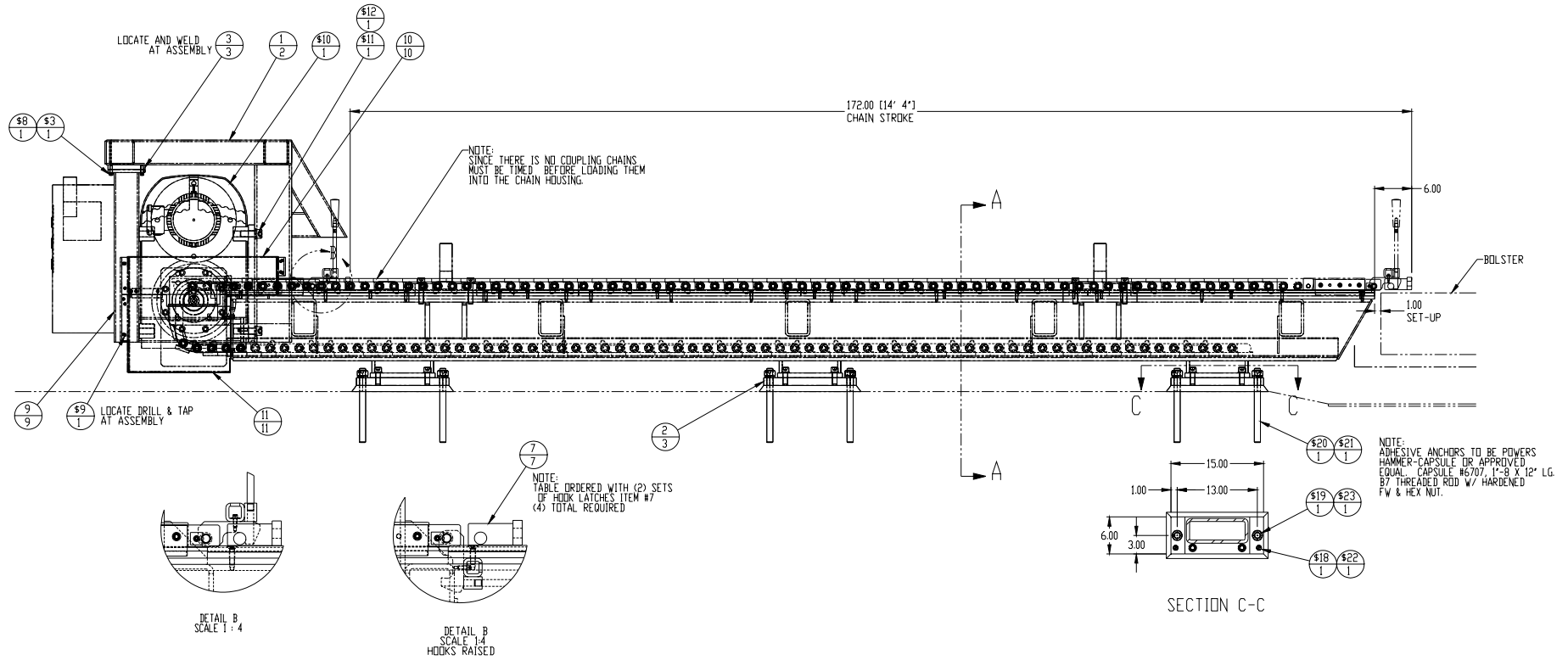
SERAPID

DIE TABLE



SERAPID

DIE TABLE



Application Information

Die exchange times: 20 – 30 min.

Die Weight: 60,000 lbs. max.

Bolster Dimensions: 64 in. (F-B) x 148 in. (L-R)

System Information

Die Table with CH60D PPS

Die transferred with no rollers

Die Table loaded with overhead crane

BTSC Rod Clamps

LP125-12, Hydraulic Power Unit